

OphthoSim™

Immersive Learning Platform Redefines Ophthalmoscopy Training



OphthoSim™ is a **hands-on simulation** system that radically transforms how students learn to diagnose and treat eye pathologies. Its proprietary software and accompanying tools empower students to actively diagnose real-world eye conditions within a simulated environment.

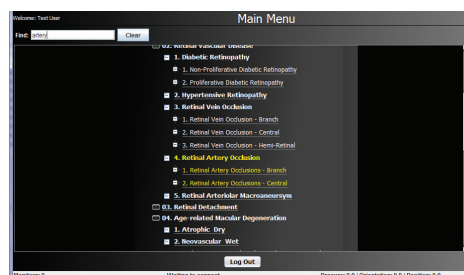
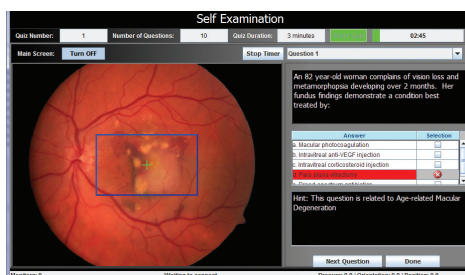
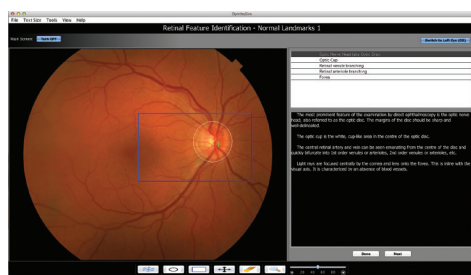
Superior Learning Outcomes & Efficacy:

- **Close the learning feedback loop** – monitor student progress through the instrumented ophthalmoscope, as students practice technique and identify retinal features
- **Increase Accuracy** – OphthoSim™ works with the OtoSim™ Otoscopy Training and Simulation System, a platform shown to **improve diagnostic accuracy by more than 50%**
- **Expand student knowledge** – system includes access to 200 high-resolution images
- **Improve viewer retention** – OphthoSim™ offers an immersive full-screen experience with an easy-to-use graphical interface
- **Broaden student capability** – system comes with a series of advanced quizzes featuring randomized, realistic clinical scenarios that test both medical and patient interaction skills

PLACE YOUR OPHTHOSIM™ ORDER TODAY:

Email: sales@otosim.com | Web: www.otosim.com
Phone: 1-866-964-5186 (North America) or 647-792-7735 (Worldwide)

OtoSim
BETTER EAR AND EYE TRAINING. BETTER OUTCOMES

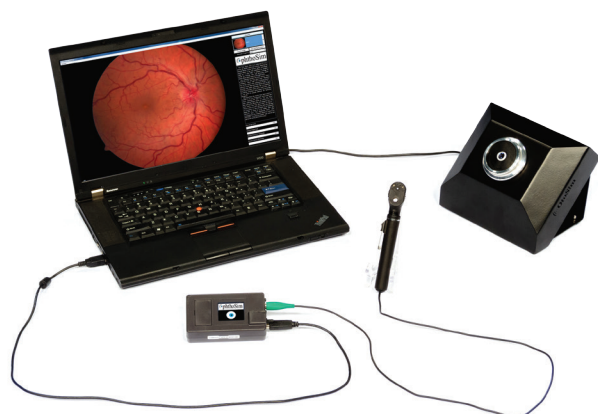


OPHTHOSIM™ KEY FEATURES:

- **OphthoSim™ Ophthalmoscope** - Detects user movements and orientation
- **Realistic OphthoSim™ Eye Geometry** - Replicates the magnification of lens in the human eye and different clinical conditions

OPHTHOSIM™ SOFTWARE:

- **OphthoSim™ Content** - Includes training and testing modules to practice and evaluate ophthalmoscopy technique
- **Landmarking Function** - Allows instructor to highlight specific characteristics of pathologies in the region student is viewing
- **Proprietary Database of Images** - Supplemented with detailed text descriptions and images are pre-annotated for normal landmarks and pathological features



FEATURED CONTENT & MATERIALS:

- **History of Ophthalmoscopy**
- **Examination Principles & Technique**
- **Instrument Use**
- **Retinal Feature Identification**
- **Pathology** - Papilledema, Diabetic Retinopathy, Glaucoma, Choroidal Rupture, Macular Degeneration and other ocular irregularities
- **Self-Examinations**
- **Examinations**

OPHTHOSIM™ INCLUDES:

- **Base Unit**
- **Eye Piece**
- **Instrumented Ophthalmoscope**
- **Control Box**
- **Software Package & Manual on USB Key**
- **Protective Hard Cases**
- **1-Year Warranty**

ACCESSORIES & EXTENDED WARRANTIES:

- **Extended Warranty** - Can be extended for a total of 2 to 3 years
- **Educators Toolkit Software Upgrade** - Software add-on to OphthoSim™ for customized education sessions and mass training. Features enable instructors to:
 - Upload and pre-annotate their own images
 - Customize lecture slides
 - Connect, lead and monitor a group of OphthoSim™ users to enable distance learning



PLACE YOUR OPHTHOSIM™ ORDER TODAY:

Email: sales@otosim.com | Web: www.otosim.com
 Phone: 1-866-964-5186 (North America) or 647-792-7735 (Worldwide)

OtoSim
 BETTER EAR AND EYE TRAINING. BETTER OUTCOMES